

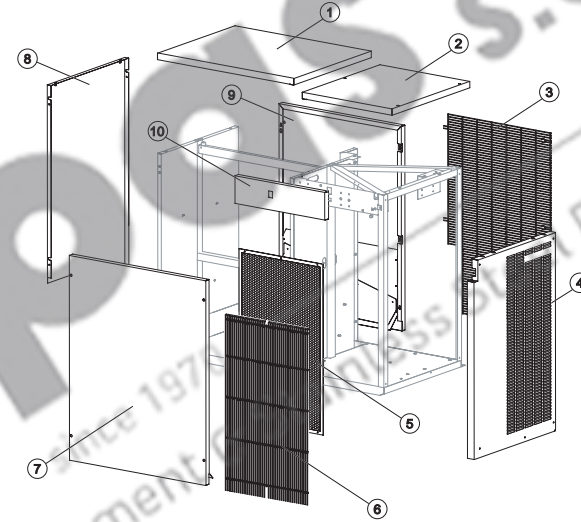


CV1650

LIST OF THE EXPLODED VIEWS



SHELL ASSY



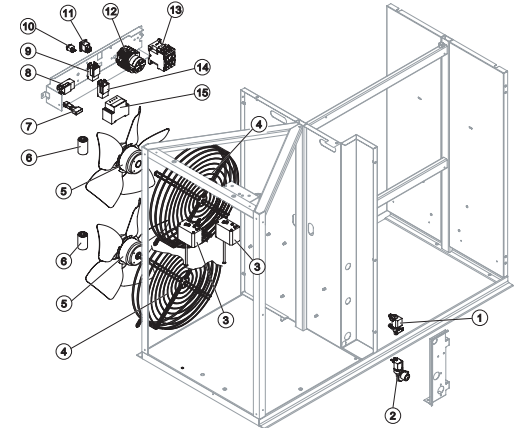
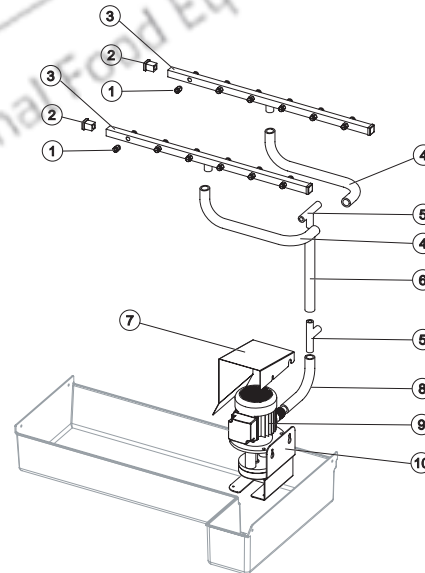
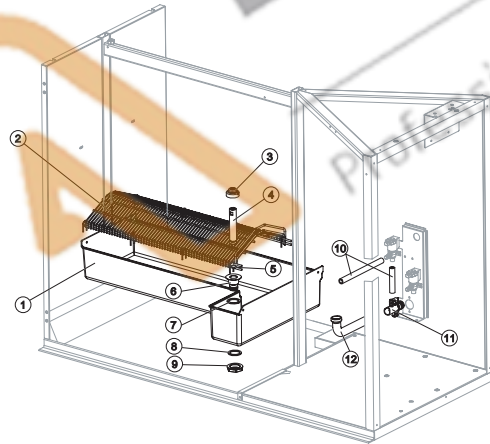
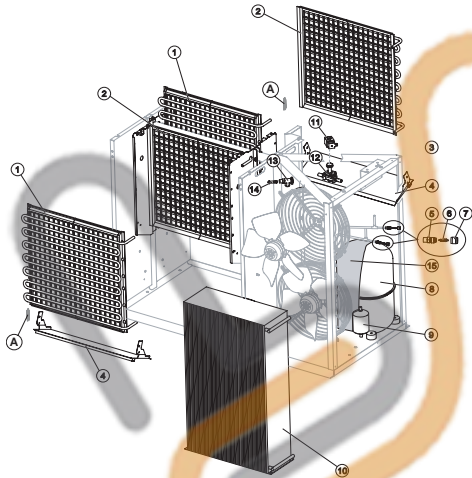
COOLING SYSTEM

HYDRAULIC CIRCUIT

SPRAYER PUMP

ELECTRIC PARTS

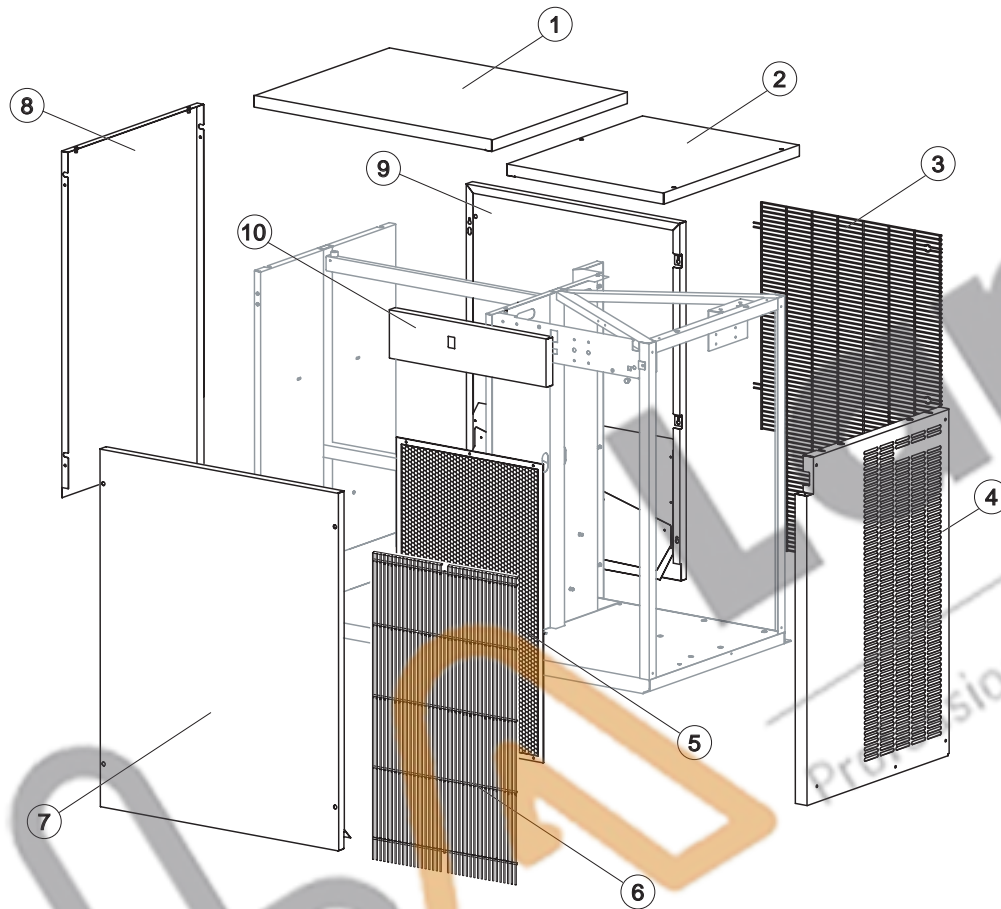
Rev. 4 - 30/07/2015





CV1650

SHELL ASSY



Ref.	Spare Description	Code
1	Top-Evaporator Side	NC22371
2	Top-Condenser Side	N22370
3	Rear Grid	N12077
4	Right Side Panel	N22364
5*	Filter	N18192
6	Front Grid	N12079
7	Front Panel Assembly	NC22368
8	Left Side Panel	N22366
9	Rear Panel Assembly	NC22367
10	Electrical Box Cover Panel	N22623

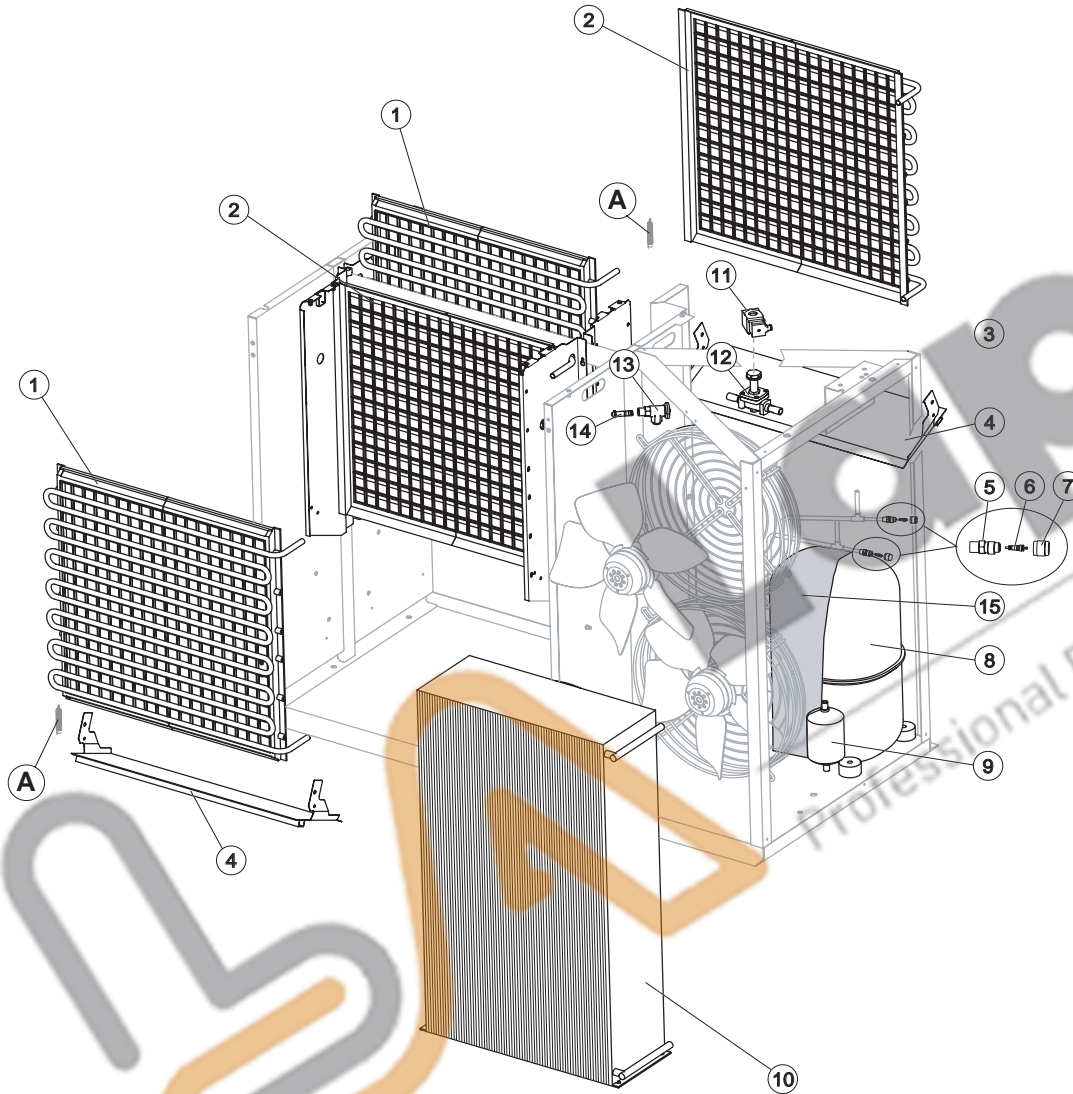
Rev. 4 - 30/07/2015



CV1650

COOLING SYSTEM

Rev. 4 - 30/07/2015



Ref.	Spare Description	Code
1	Evaporator (Front)	ND10504
2	Evaporator (Back)	ND10505
4	Horizontally Hinged Panel	N22385
5	Vacuum-Charge Valve Body	N14007
6*	Vacuum-Charge Valve Device	N14005
7*	Vacuum-Charge Valve Plug	N14006
8	Compressor	See Table -
9*	Solid Filter	N14255
10	Air Condenser	N20830
11*	Hot Gas Valve Coil	N23091
12*	Hot Gas Valve Body	N20832
13	Expansion Valve	N20826
14	Orifice	Current Version N20946
14	Orifice	Till s/n. 471749 N20794
15	Compressor Insulation	N18254

⚠ Eliminated the Spring (horizontally hinged panel) ref. A, suggested removal even from the models where they are present.

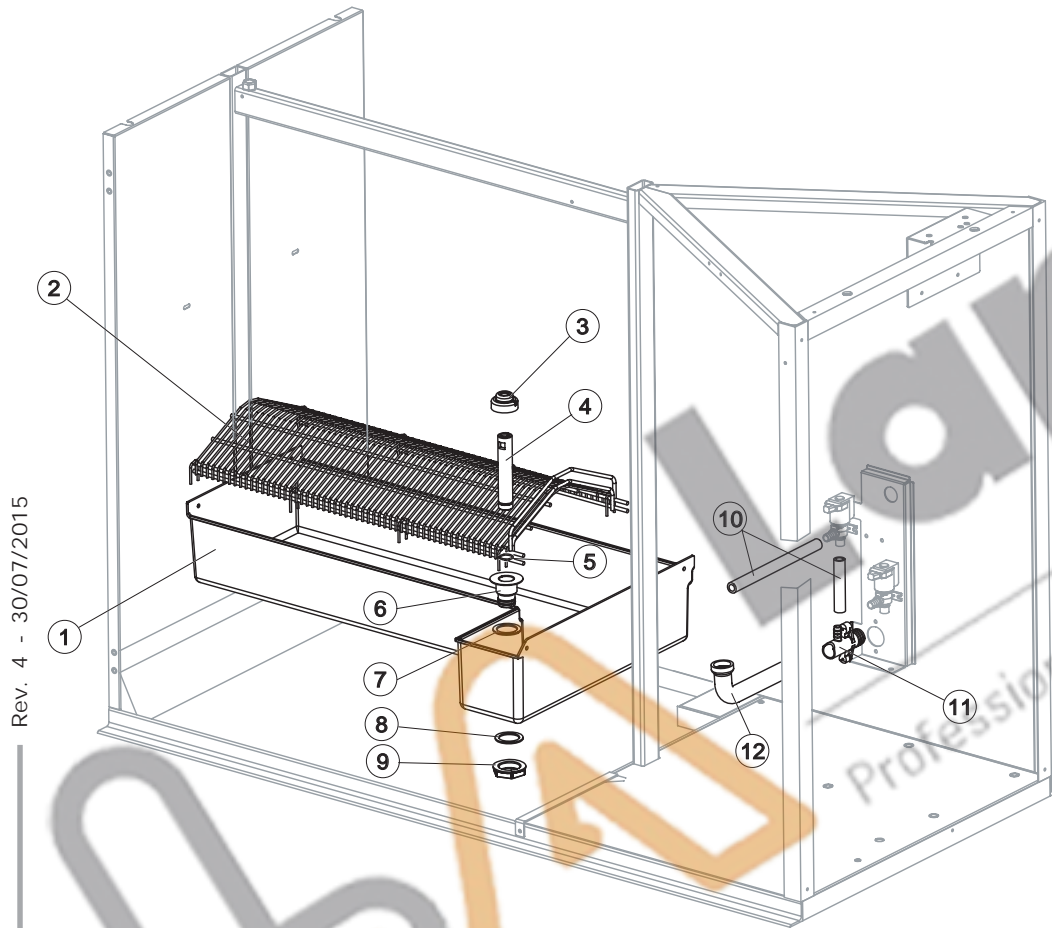
Ref. 8 - Compressor

Voltage	Code	Till s/n. 681898
T15	N231100	N23817
T16	N231101	N23824



CV1650

HYDRAULIC CIRCUIT



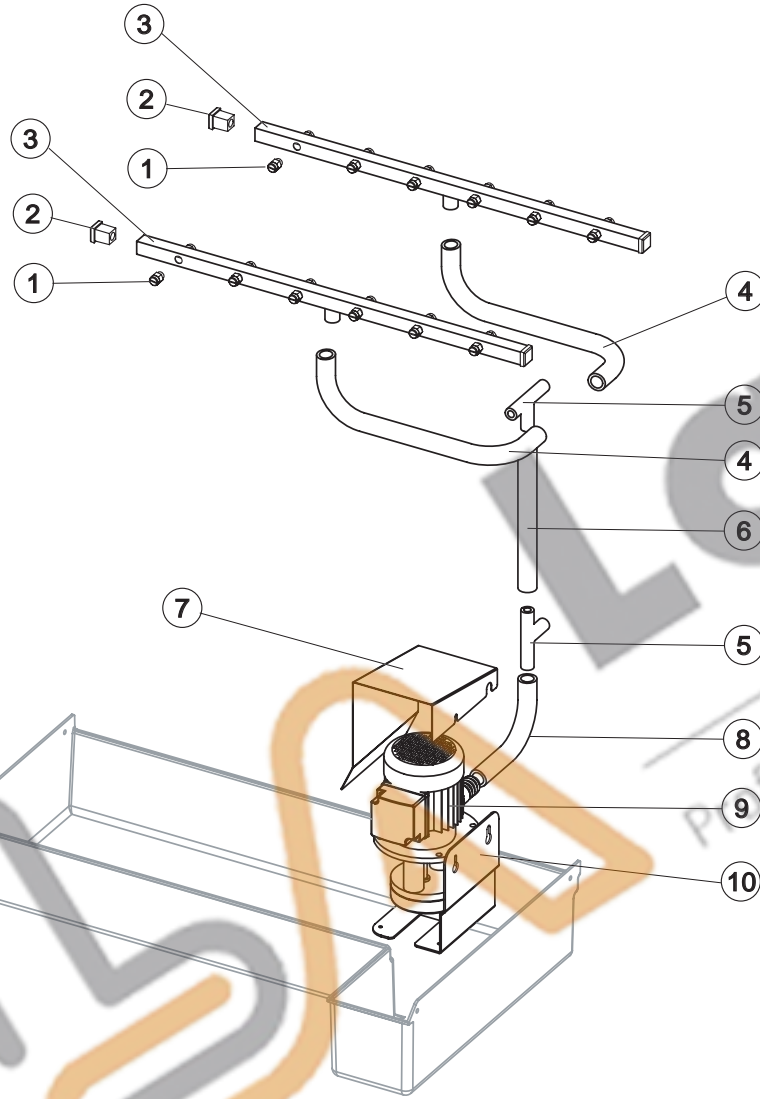
Ref.	Spare Description	Code
1	Water Basin	N10501
2	Ice Cubes Slide	ND12078
3*	Overflow Cap	N10305
4*	Overflow Pipe	N10399
5*	OR Gasket for Overflow Pipe	N20233
6	Overflow Pipe Nipple	N10472
7	Silicone Gasket	N13006
8	Semirigid Polyethylene Gasket	N13007
9	Bin Discharge Nut	N10096
10	Connection Pipe	N13102
11	Discharge Nipple	N10431
12	Basin Discharge Pipe	N13059

Rev. 4 - 30/07/2015



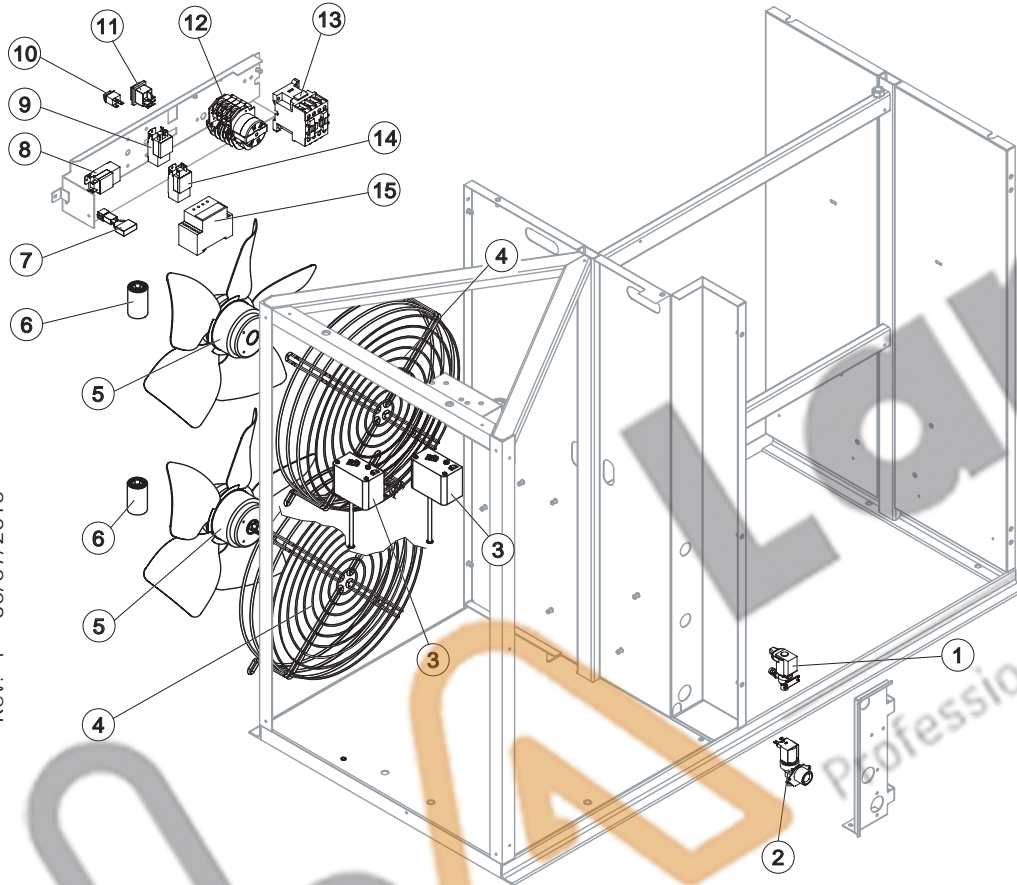
CV1650

SPRAYER PUMP



Ref.	Spare Description	Code
1	Sprayer	ND20002
2	Sprayer Bar Plug	N10012
3*	Sprayer Bar Assembly	NC20617
4	Sprayer Bar Connection Pipe	N13134
5	Plastic "T" Joint - ø 20	N10082
6	Connection Pipe	N13111
7	Pump Protection Panel	N22377
8	Connection Pipe	N13005
9*	Pump	N23818
10	Pump Motor Support	N22383

Rev. 4 - 30/07/2015



Rev. 4 - 30/07/2015

Ref.	Spare Description	Code
1*	Water Outlet Valve	N23537
2*	1 Way-Water Inlet Valve	N23819
3	Safety Pressure Switch	N23729
4	Fan Motor Grid	N12053
5*	Fan Motor	N23468
6*	5µF Capacitor	N23469
7	Anti Radio Interference Filter	Only400-415V 3N~ 50Hz NC23459
8*	Condenser Pressure Switch	N23175
9*	Evaporator Thermostat	NR23591
10	"Cleaning" Switch	N23619
11*	Green Light Switch (On-Off)	N23327
12*	Timer	See Table -
13*	Contactor	N23398
14*	Bin Thermostat	NR23005
15	Voltage Control Relay	See Table -

Ref. 12* - Timer

Tension	Code
400-415V 3N~ 50 Hz	N23635
220/230V 3~ 60 Hz	N23632

Ref. 15 - Voltage control relay

Tension	Code
400-415V 3N~ 50 Hz	N23903
220/230V 3~ 60 Hz	N23904