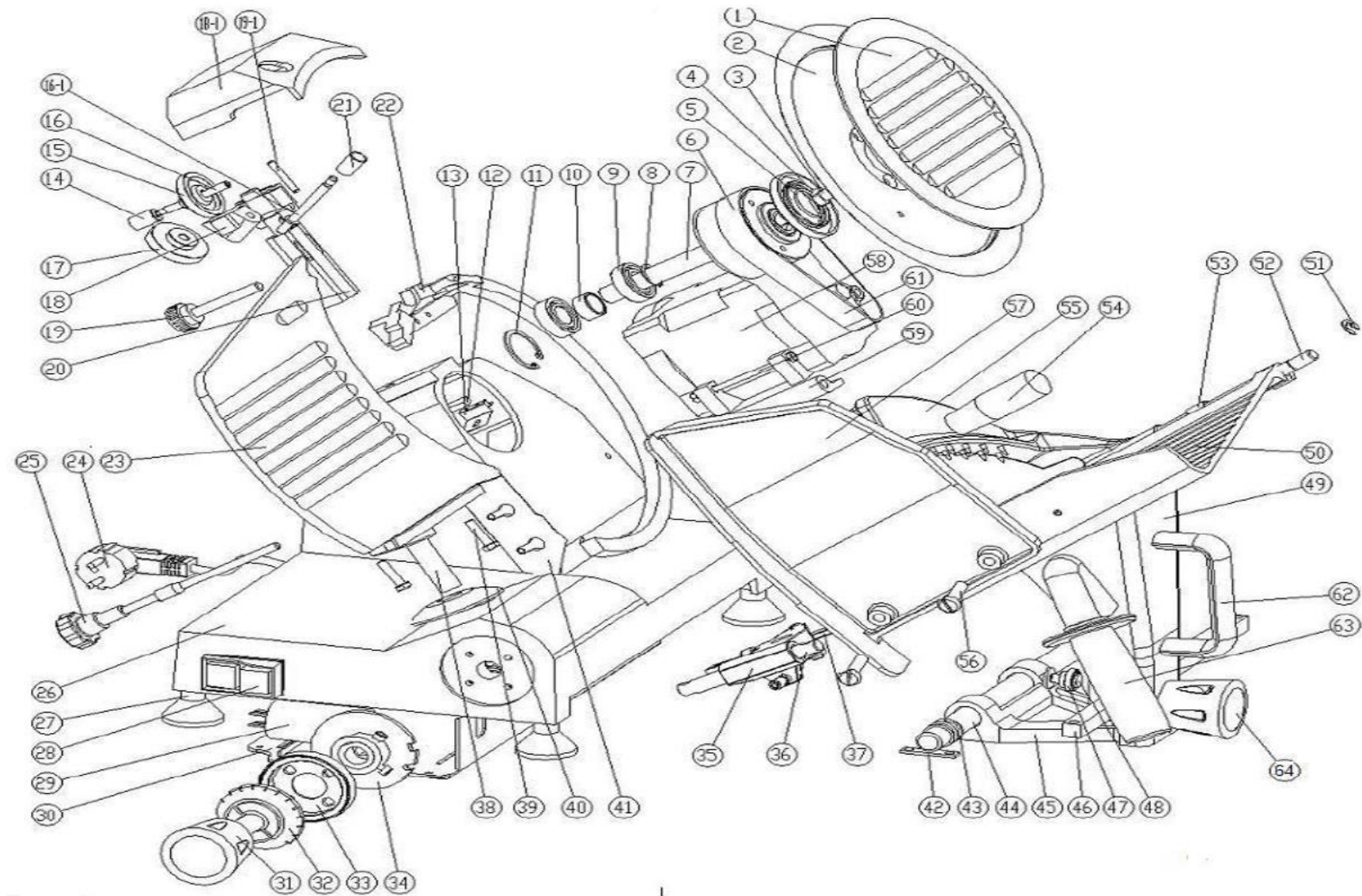


EXPLODED VIEW
MS220/250/300



Part No	Part Name	33	digital ring
1	Blade protection plate	34	cam
2	Blade	35	slide holder
3	Screw for blade	36	slide axis
4	sealing ring for blade shaft	37	Axis for slide holder
5	sealing ring for blade spindle	38	holder for locking plate
6	Sleeve of blade	39	locking nut for locking plate
7	Spindle of blade	40	sealing ring for locking plate
8	Blocking ring for bearing	41	scraping board
9	Bearing	42	locking board for circle orbit
10	Isolating sleeve	43	spring for circle orbit
11	Blocking ring for hole	44	circle orbit
12	Microswitch	45	sliding frame
13	bracket for microswitch	46	square orbit
14	Button for sharpening stone	47	Spherical Bearings
15	sharpening stone	48	Axis for sliding frame
16	axis of sharpening stone	49	carriage stand
(16-1)	axis of trim stone	50	carriage
17	trim stone	51	Circlip
18	stand of stone	52	pole for carriage
(18-1)	cover	53	bearing for pole of carriage
19	handlebar	54	handle of pressor
20	stand of sharpner	55	pressor
21	button for trim stone	56	French countersunk head screw
22	blade protection ring(include screw)	57	protection board (includes screw)
23	locking plate	58	motor
24	wire and plug	59	bracket for motor
25	pole	60	Hinge axis
26	body	61	belt
27	feet	62	U type handle
28	switch	63	Aluminum handle (only for HBS-250L,HBS-275L & HBS-300L)
29	capacitor		
30	bottom		
31	Adjusting handlebar	64	round handle
32	digital ring plate		